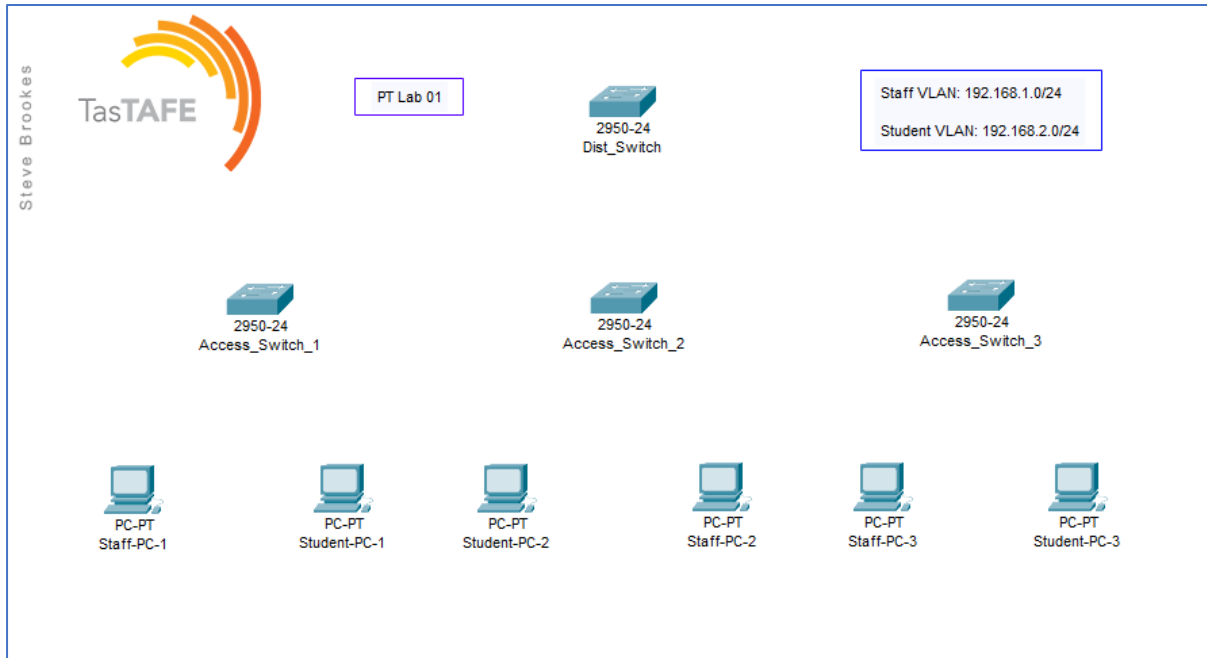


PT Lab 01 – Instructions

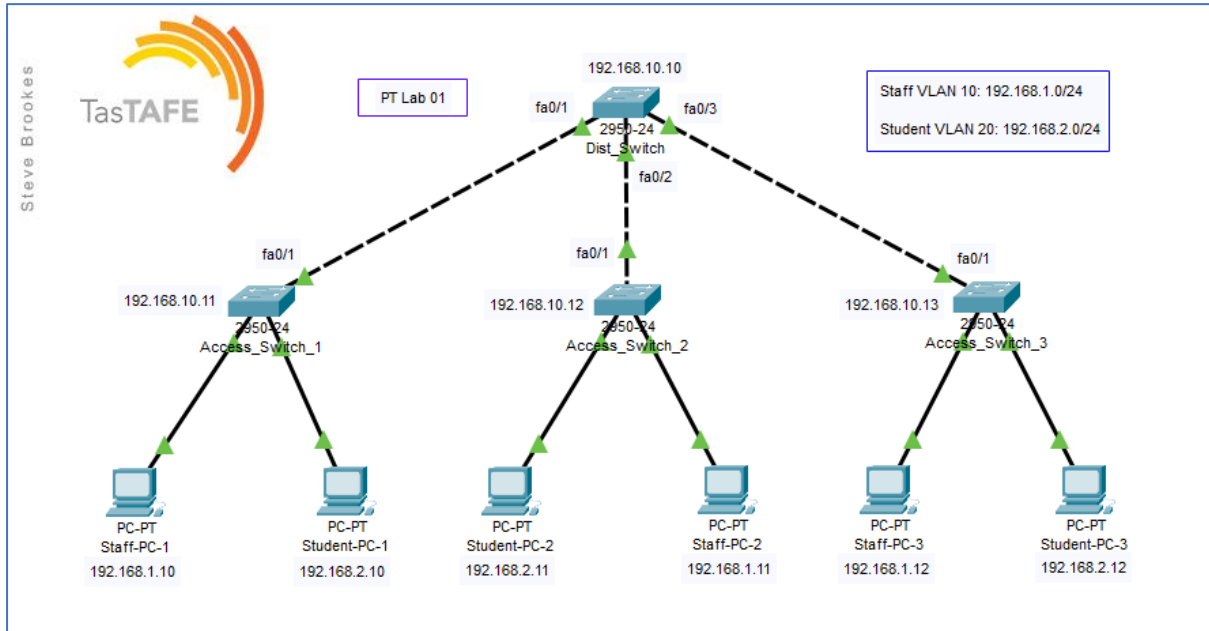


PT Lab 01 Template

Using 'PT Lab 01 Template complete the following:

- Connect Access switches to `Dist_Switch` using cross-over cables.
- Connect Staff and Student PCs to their associated Access switches.
- Label all significant ports.
- Assign IP addresses to all PCs as per the listed VLAN information.
- Configure hostnames and banners on all switches.
- Enable privileged password on all switches.
- Configure and secure console lines on all switches.
- Shutdown all unused switchports on Access switches.
- Assign IP addresses and default gateways to all switches (using VLAN 1).
- Create named VLANs for Staff and Students on all switches.
- Assign switchports to required VLANs on all Access switches.
- Configure trunk links between Access and `Dist_Switch`.
- Enable portfast on all Access switch ports connected to hosts.
- Ensure the running configuration is saved to NVRAM on all switches.
- Test connectivity to ensure all PCs on the same VLAN can ping.

Save the completed PT Lab file for future reference.



PT Lab 01 Complete